



Government of India
Ministry of Earth Sciences
India Meteorological Department



Press Release

Date: 14th July, 2025

Time of Issue: 1330 hours IST

**Subject: i) Well marked Low Pressure area over northeast Rajasthan & adjoining northwest Madhya Pradesh and another over southeast Gangetic West Bengal and adjoining Bangladesh.
ii) Heavy to very heavy rainfall with isolated extremely heavy likely over Rajasthan on 14th & 15th; Odisha, Gangetic West Bengal, southeast Jharkhand on 14th and Chhattisgarh on 15th July, 2025.**

Realised weather during past 24 hours till 0830 hours IST of today, the 14th July, 2025:

- ❖ Heavy to very heavy rainfall with isolated extremely heavy rainfall (≥ 21 cm) has been recorded over Odisha.
- ❖ Heavy to very heavy rainfall (7-20 cm) has been recorded at isolated places over Jharkhand, East Uttar Pradesh, Rajasthan, West Madhya Pradesh; Heavy rainfall (7-11 cm) at isolated places over Himachal Pradesh, Uttarakhand, Haryana, West Uttar Pradesh, Chhattisgarh, West Bengal, Madhya Maharashtra, Gujarat state, Tamil Nadu, Coastal & South Interior Karnataka, west Assam and Tripura.

For more details of realised weather, kindly refer [Annexure I](#).

i. Weather Systems, Forecast and Warnings (refer to Annexure II & III):

- ❖ The **Monsoon trough** is active; with its western end runs to the south of its normal position and eastern end near its normal position at mean sea level.
- ❖ Yesterday's low pressure area over northwest Madhya Pradesh & neighbourhood moved slowly west-northwestwards and lay as a **well marked Low Pressure area over northeast Rajasthan & adjoining northwest Madhya Pradesh** at 0830 hrs IST of today, the 14th July, 2025. It is likely to continue to move slowly west-northwestwards across Rajasthan during next 2 days.
- ❖ Yesterday's low pressure area over north Bay of Bengal and adjoining coastal areas of Bangladesh, West Bengal & north Odisha moved north-northwestwards, lay as a **well marked low pressure area** over southwest Bangladesh & adjoining Gangetic West Bengal at 0530 hrs IST. Moving slowly west-northwestwards, it lay over **southeast Gangetic West Bengal & adjoining Bangladesh** at 0830 hrs IST of today, the 14th July, 2025. It is likely to move northwestwards and concentrate into a Depression over Gangetic West Bengal during next 24 hours.
- ❖ A **Western Disturbance** as a trough in middle tropospheric levels runs roughly along Long. 66°E to the north of Lat. 28°N.

Under the influence of these systems, the following weather is likely:

Northwest India:

- ✓ **Extremely heavy rainfall (≥ 21 cm)** very likely at isolated places over Rajasthan on 14th & 15th July.
- ✓ Isolated **heavy rainfall** likely over Himachal Pradesh, Uttarakhand, East Uttar Pradesh during 14th-20th; Jammu-Kashmir during 14th-17th; Punjab on 14th & 16th; Haryana, Chandigarh on 14th; West Uttar Pradesh during 16th-20th; Rajasthan during 14th-17th July with **very heavy rainfall over Himachal Pradesh on 14th & 15th; Uttarakhand on 15th; West Rajasthan on 16th; East Uttar Pradesh on 17th July.**
- ✓ Light/moderate rainfall at most/many places accompanied with thunderstorm, lightning likely over western Himalayan region and some/many places over the plains during next 7 days.

East & Central India:

- ✓ **Extremely heavy rainfall (≥ 21 cm)** very likely at isolated places over Odisha, coastal Gangetic West Bengal, southeast Jharkhand on 14th and Chhattisgarh on 15th July.

- ✓ Isolated **heavy rainfall** very likely to continue over West Madhya Pradesh during 14th-18th, East Madhya Pradesh, Odisha during 14th-20th, Chhattisgarh, Bihar during 14th-16th, Andaman & Nicobar Islands on 15th; Sub-Himalayan West Bengal & Sikkim on 14th, 15th, 19th & 20th July **with very heavy rainfall over West Madhya Pradesh on 14th, East Madhya Pradesh on 16th & 17th, Jharkhand during 14th-16th, Odisha, Gangetic West Bengal on 15th and Bihar on 15th & 16th July.**
- ✓ Light/moderate rainfall at most/many places accompanied with thunderstorm & lightning likely over the region during next 7 days with moderate to intense lightning over Bihar today.

West India:

- ✓ **Heavy rainfall** likely at isolated places over Konkan & Goa, Ghat areas of Madhya Maharashtra, Saurashtra & Kutch on 14th and Gujarat Region on 14th & 15th July **with very heavy rainfall over Gujarat Region on 14th July.**
- ✓ Light/moderate rainfall at many/some places very likely over the region during next 5 days.

Northeast India:

- ✓ Light/moderate rainfall at many places accompanied with **thunderstorm, lightning** likely to continue over Northeast India during next 7 days.
- ✓ Isolated **heavy rainfall** very likely over Assam & Meghalaya, Arunachal Pradesh, Mizoram & Tripura during 14th-16th July with **very heavy rainfall** over Meghalaya on 15th July.

South Peninsular India:

- ✓ Isolated **heavy to very heavy rainfall** likely over Kerala & Mahe, Tamil Nadu, Karnataka during 14th-20th; Tamil Nadu during 15th-19th, isolated **heavy rainfall** over Lakshadweep on 19th & 20th; Coastal Andhra Pradesh & Yanam during 18th-20th; Rayalaseema on 18th & 19th July.
- ✓ **Strong surface winds** (speed reaching 40-50 kmph) very likely over South Peninsular India during next 5 days.
- ✓ Light/moderate rainfall at many/some places over Kerala & Mahe, Lakshadweep, Karnataka, Rayalaseema; isolated to scattered rainfall over Coastal Andhra Pradesh & Yanam, Telangana during next 7 days.

Hot & Humid weather Warnings:

Hot & Humid weather conditions very likely in isolated pockets of Tamil Nadu, Coastal Andhra Pradesh & Yanam and Rayalaseema on 14th & 15th July.

Fishermen Warnings:

Fishermen are advised to avoid venturing into the following from 14th July to 19th July 2025 to the following Areas:

Arabian Sea: Along and off Gujarat, Konkan, Goa coasts for 14th to 16th July; along and off Kerala coasts, over Lakshadweep, Comorin areas; along and off the Somalia coast and adjoining sea areas, Oman and adjoining Yemen coast & adjoining sea areas; most parts of central Arabian Sea and adjoining south and north Arabian Sea for 14th to 19th July, northern parts of south Arabian Sea and Comorin area during 14th to 19th July; some parts of northeast Arabian Sea for 14th and 15th July.

Bay of Bengal:

North, adjoining central BoB, along off Odisha, West Bengal, Bangladesh coasts for 14th July; many parts of southwest Bay of Bengal and adjoining westcentral Bay of Bengal for 15th to 18th July; some southern parts of southwest Bay of Bengal for 14th & 15th July); over some southern parts of southwest and adjoining southeast Bay of Bengal for 16th to 19th July; over Gulf of Mannar for day 1 to day 5 (14th to 19th July); over south Andaman Sea for 17th & 18th July.

Total suspension of fishing operations is suggested over above mentioned areas and dates.

ii. Weather conditions and forecast over Delhi/NCR during 14th to 17th July, 2025 (Annexure IV)

For more details, kindly refer National Weather Bulletin:

https://mausam.imd.gov.in/responsive/all_india_forecast_bulletin.php

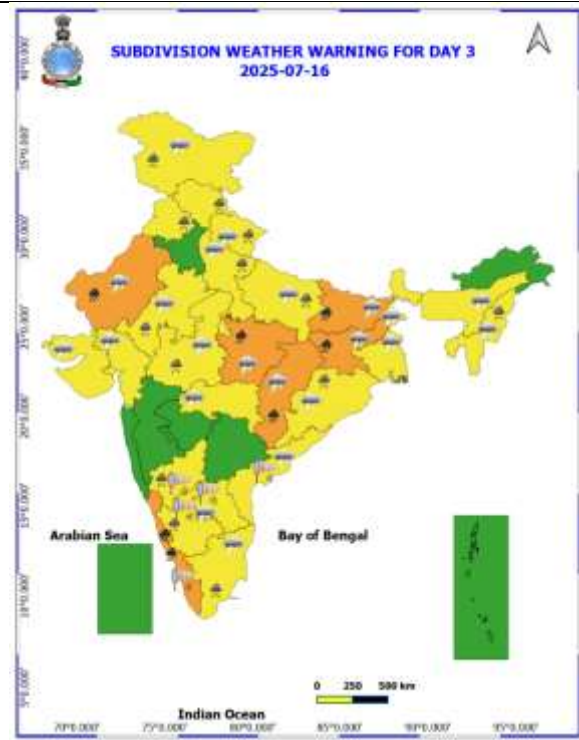
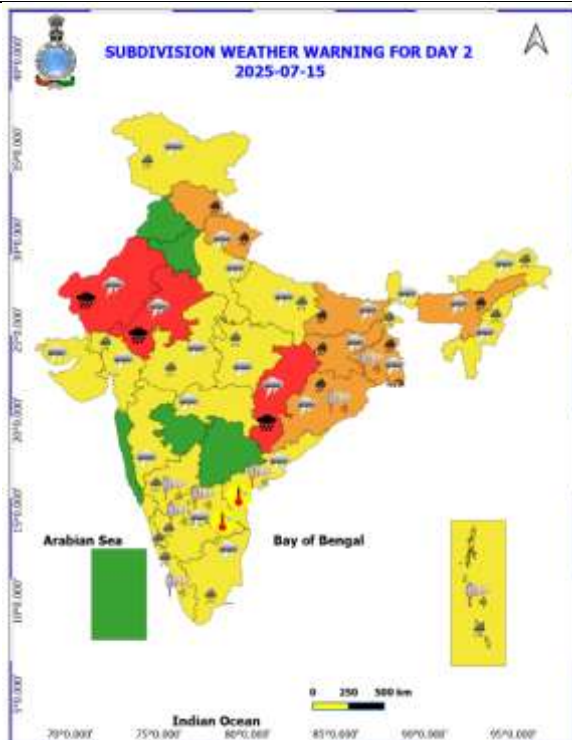
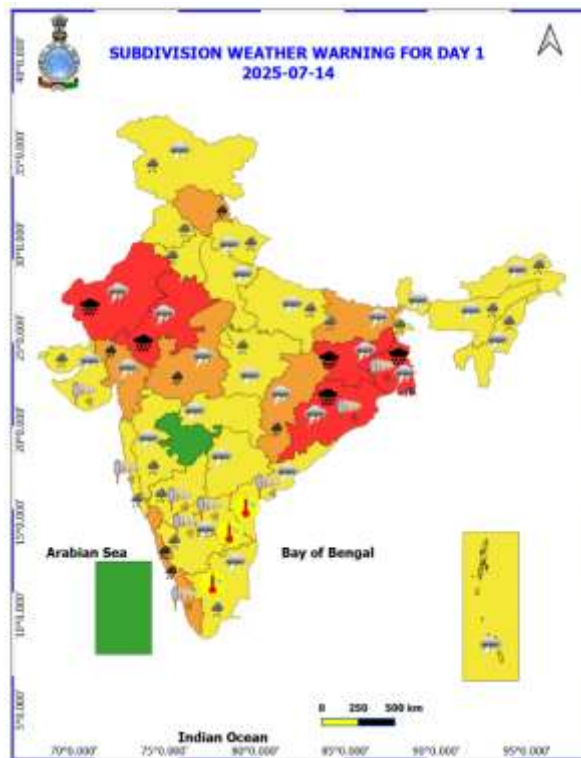
For District wise warnings refer: <https://mausam.imd.gov.in/responsive/districtWiseWarningGIS.php>

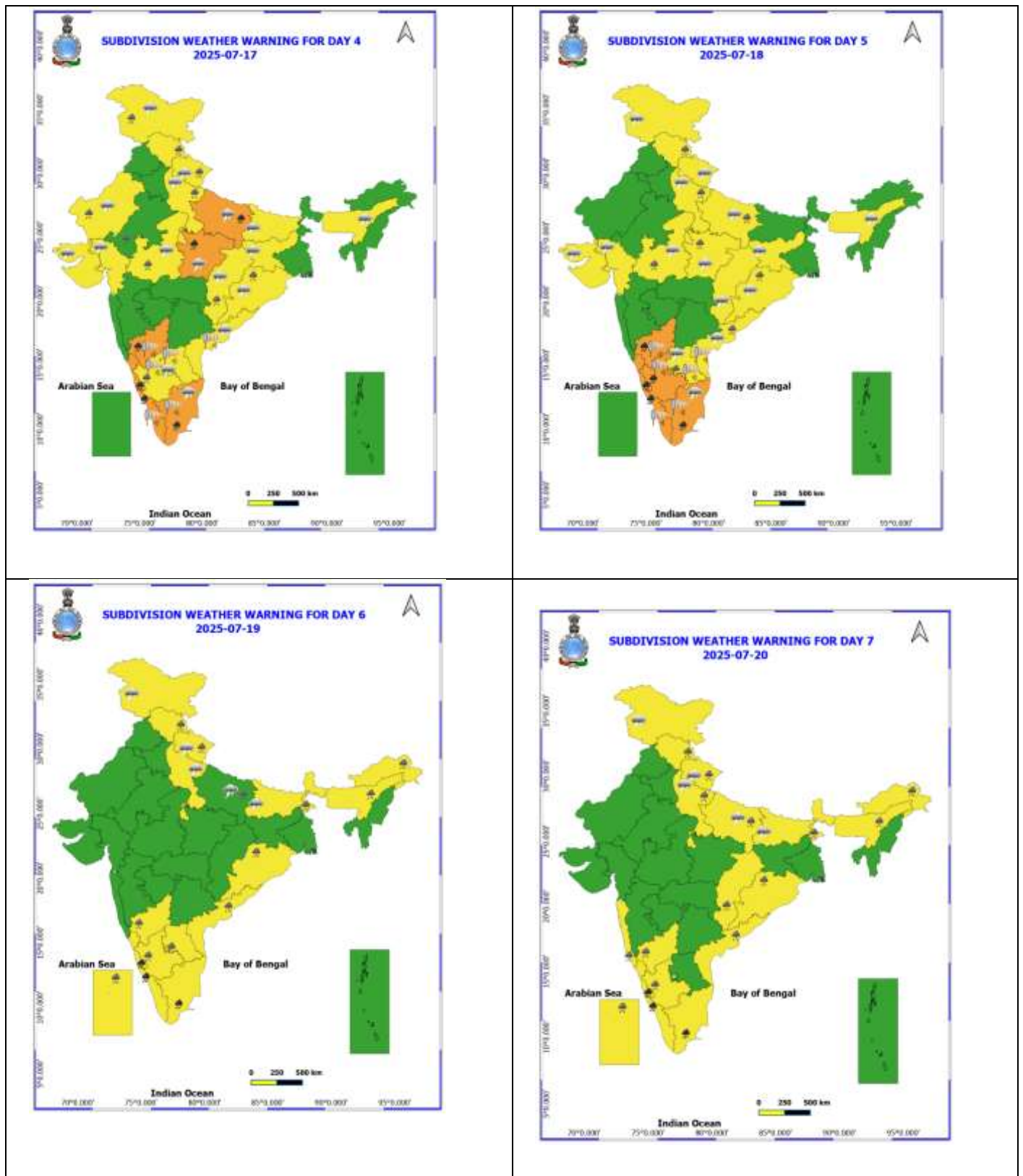
Rainfall recorded (in cm) during past 24 hours till 0830 hours IST of today, the 14th July:

- ❖ **Odisha:** Mandira Dam (dist Sundargarh) 22; Rajkanika (dist Kendrapara) 14; Dhamnagar (dist Bhadrak) 12; Panposh (dist Sundargarh), Jenapur (dist Jajpur) 11 Each; Pallahara (dist Angul), Lathikata (dist Sundargarh) 10 Each; Kankadahad (dist Dhenkanal), Bhuban (dist Dhenkanal), Sukinda (dist Jajpur), Raurkela (dist Sundargarh) 9 Each; Batagaon (dist Sambalpur), Sonepur (dist Sonepur), Nayagarh (dist Nayagarh), Bhandaripokhari (dist Bhadrak), Raruana (dist Mayurbhanj) 8 Each; Kaniha (dist Angul), Ghatagaon (dist Keonjhar), Khairamal (dist Boudhgarh), Chandbali (dist Bhadrak), Hatadihi (dist Keonjhar), Sukruli (dist Mayurbhanj) 7 Each;
- ❖ **East Rajasthan:** Mangrol (dist Baran) 18; Shahabad (dist Baran) 17; Pipalda SR (dist Kota) 15; Aspur (dist Dungarpur), Kota-aero (dist Kota), Kishanganj (dist Baran) 12 Each; Deogarh (dist Rajsamand), Baran (dist Baran), Bundi (dist Bundi) 11 Each; Bari (dist Dholpur), Ghatol (dist Banswara) 10 Each; Chothkabarwara SR (dist Sawai Madhopur), Girva SR (dist Udaipur), Uniara/aligarh (dist Tonk), Ganeshpur SR (dist Dungarpur), Bhungra SR (dist Banswara), Mounntabu Tehsil SR (dist Sirohi), Bhainsroadgarh SR (dist Chittorgarh) 9 Each; Tatgarh SR (dist Ajmer), Atru SR (dist Baran), Bari-sadri (dist Chittorgarh), Khandar SR (dist Sawai Madhopur), Sarmathura SR (dist Dholpur) 8 Each; Karauli (dist Karauli), Udaipur/D-aero (dist Udaipur), Nadoti (dist Karauli), Anta SR (dist Baran), Chabra (dist Baran) 7 Each;
- ❖ **West Madhya Pradesh:** Badoda (dist Sheopur) 17; Sabalgarh (dist Morena) 15; Khategaon (dist Dewas) 14; Bagli (dist Dewas), Piploda (dist Ratlam), Satwas (dist Dewas) 11 Each; Vijaypur (adp) (dist Sheopur), Badarwas (dist Shivpuri) 10 Each; Kolaras (dist Shivpuri), Isagarh (dist Ashoknagar), Nagda (dist Ujjain), Karhal (dist Sheopur), Bairad (dist Shivpuri), Bamori (dist Guna) 9 Each; Kannod (dist Dewas), Tonkhurd (dist Dewas), Alot (dist Ratlam) 8 Each; Guna-aws (dist Guna), Jaora (dist Ratlam), Nasrullahganj (dist Sehore), Sheopur-aws (dist Sheopur), Veerapur (dist Sheopur) 7 Each;
- ❖ **West Rajasthan:** Pali (dist Pali) 17; Desuri (dist Pali) 14; Bilara (dist Jodhpur) 11; Marwar Junction (dist Pali) 10; Sojat (dist Pali) 9; Dungargarh (dist Bikaner) 8; Raipur SR (dist Pali), Sujargarh (dist Churu), Rohat SR (dist Pali) 7 Each;
- ❖ **Jharkhand:** Ghatsila (dist East Singhbhum) 17; Chandil (dist Seraikela-kharsawan) 11; Manoharpur (dist West Singhbhum) 10; Torpa (dist Khunti), Arki (dist Khunti), Anandpur (dist West Singhbhum), Dhalbhumgarh (dist East Singhbhum), Rania (dist Khunti) 8 Each; Jamshedpur AP (dist East Singhbhum), Kumardungi (dist West Singhbhum) 7 Each;
- ❖ **East Uttar Pradesh:** Turtipar (dist Ballia) 13; Ballia (dist Ballia), Chunar (dist Mirzapur) 10 Each; Varanasi BHU (dist Varanasi) 8; Mahsi (dist Bahraich), Fatehpur Tehsil (dist Barabanki) 7 Each;
- ❖ **Gujarat Region:** Satlasana (dist Mehsana) 10; Khedbrahma (dist Sabarkantha), Dharoi Colony (dist Mehsana) 7 Each; C
- ❖ **oastal Karnataka:** Kota (dist Udupi) 9; Shakti Nagar (dist Dakshina Kannada), Mangaluru (dist Dakshina Kannada) 8 Each; Udupi (dist Udupi), Bantwal (dist Dakshina Kannada) 7 Each;
- ❖ **Sub Himalayan West Bengal:** Chalouni Tea Estate (dist Jalpaiguri) 9;
- ❖ **Assam:** Goalpara AWS (dist Goalpara) 9; Goalpara PTO (dist Goalpara) 8; Goibargaon (dist Baksa) 7;
- ❖ **Gangetic West Bengal:** Sagar Island PTO (dist South 24 Parganas) 8; **Chhattisgarh:** Pratappur (dist Surajpur) 8; Wandrafnagar (dist Balrampur) 7;
- ❖ **South Interior Karnataka:** Agumbe AWS (dist Shivamogga) 7;
- ❖ **Saurashtra & Kutch:** Barvala (dist Botad) 7;
- ❖ **Himachal Pradesh:** Rajgarh (dist Sirmaur) 7;
- ❖ **Haryana:** Sohana (dist Gurgaon), Palhawas REV (dist Rewari) 7 Each;
- ❖ **West Uttar Pradesh:** Talbehat (dist Lalitpur) 7;
- ❖ **Tripura:** Chhamonu (dist Dhalai) 7.

Table-1								
7 Days Rainfall Forecast								
S.No.	Subdivision	14- Jul	15- Jul	16- Jul	17- Jul	18- Jul	19- Jul	20- Jul
		Day 1	Day 2	Day 3	Day 4	Day 5	Day 6	Day 7
1	ANDAMAN & NICOBAR ISLANDS	WS	WS	WS	WS	WS	WS	WS
2	ARUNACHAL PRADESH	SCT	SCT	SCT	SCT	FWS	FWS	WS
3	ASSAM & MEHGHALAYA	FWS	WS	SCT	SCT	FWS	FWS	WS
4	NAGALAND, MANIPUR, MIZORAM AND TRIPURA	WS	WS	WS	FWS	FWS	FWS	SCT
5	SUB HIMALAYAN WEST BENGAL & SIKKIM	WS	FWS	FWS	SCT	SCT	WS	WS
6	GANGETIC WEST BENGAL	WS	WS	WS	FWS	FWS	SCT	SCT
7	ODISHA	WS	WS	FWS	FWS	FWS	FWS	FWS
8	JHARKHAND	WS	WS	WS	FWS	SCT	SCT	SCT
9	BIHAR	FWS	FWS	FWS	SCT	ISOL	SCT	SCT
10	EAST UTTAR PRADESH	SCT	FWS	FWS	FWS	FWS	SCT	FWS
11	WEST UTTAR PRADESH	SCT	SCT	FWS	FWS	FWS	SCT	SCT
12	UTTARAKHAND	FWS	FWS	FWS	FWS	FWS	WS	WS
13	HARYANA, CHANDIGARH & DELHI	SCT	SCT	SCT	SCT	SCT	ISOL	SCT
14	PUNJAB	FWS	SCT	SCT	SCT	SCT	ISOL	SCT
15	HIMACHAL PRADESH	FWS	FWS	WS	WS	FWS	FWS	WS
16	JAMMU AND KASHMIR AND LADAKH	FWS	FWS	FWS	FWS	SCT	SCT	SCT
17	WEST RAJASTHAN	FWS	WS	FWS	FWS	ISOL	ISOL	ISOL
18	EAST RAJASTHAN	WS	WS	FWS	SCT	SCT	ISOL	ISOL
19	WEST MADHYA PRADESH	WS	FWS	FWS	SCT	SCT	SCT	SCT
20	EAST MADHYA PRADESH	WS	FWS	FWS	WS	WS	FWS	FWS
21	GUJRAT REGION	WS	FWS	SCT	SCT	SCT	SCT	SCT
22	SAURASHTRA & KUTCH	FWS	SCT	SCT	SCT	SCT	SCT	SCT
23	KONKAN & GOA	WS	FWS	FWS	FWS	FWS	WS	WS
24	MADHYA MAHARASHTRA	FWS	SCT	ISOL	ISOL	ISOL	SCT	SCT
25	MARATHWADA	ISOL	ISOL	ISOL	ISOL	ISOL	ISOL	ISOL
26	VIDARBHA	SCT	SCT	FWS	SCT	SCT	SCT	SCT
27	CHHATTISGARH	FWS	FWS	SCT	SCT	SCT	SCT	FWS
28	COASTAL ANDHRA PRADESH	ISOL	ISOL	ISOL	SCT	FWS	FWS	FWS
29	TELANGANA	ISOL	ISOL	ISOL	FWS	FWS	FWS	SCT
30	RAYALASEEMA	ISOL	ISOL	ISOL	SCT	WS	FWS	FWS
31	TAMILNADU & PUDUCHERRY	ISOL	ISOL	SCT	SCT	SCT	SCT	SCT
32	COSTAL KARNATAKA	WS	WS	WS	WS	WS	WS	WS
33	NORTH INTERIOR KARNATAKA	SCT	SCT	FWS	FWS	FWS	WS	WS
34	SOUTH INTERIOR KARNATAKA	FWS	FWS	FWS	WS	WS	WS	WS
35	KERALA AND MAHE	WS	WS	WS	WS	WS	WS	WS
36	LAKSHADWEEP	WS	WS	WS	WS	WS	WS	WS

- As the lead period increases forecast accuracy decrease.





- Action may be taken based on ORANGE AND REDCOLOUR warnings.
- Vulnerable regions likely urban and hilly areas action may be initiated for heavy rainfall warning.
- As the lead period increases forecast accuracy decreases.

Detailed districtwise MultiHazard weather warning for next five days available at <https://mausam.imd.gov.in/responsive/districtWiseWarningGIS.php>

Weather forecast over Delhi/NCR during 14th to 17th July 2025**Past Weather:**

There has been fall in the minimum temperature up to 1 to 2°C and fall in maximum temperature up to 1°C over Delhi/NCR during the past 24 hours. The maximum and minimum temperatures over Delhi were around 33 to 35°C and 23 to 26°C respectively. The minimum temperature was below normal up to 1 to 4°C and the maximum temperature was below normal up to 2 to 3°C. Generally cloudy sky conditions with predominant surface wind from the southeast/northeast direction with wind speeds up to 12 kmph prevailed during the past 24 hours. Light rainfall has been recorded in most places with isolated places moderate rainfall over Delhi. Generally cloudy sky conditions with a windspeed of less than 16 kmph from the east direction prevailed over the region in the forenoon today.

Weather Forecast:

14.07.2025: Generally cloudy sky. Occasionally strong surface winds 20-30 kmph gusting to 40 kmph. Light to moderate rain accompanied with thunderstorms/lightning. The maximum temperatures over Delhi are likely to be in the range of 31 to 33°C. The maximum temperature will be below normal up to 3 to 5°C. The predominant surface wind will likely be from the southeast direction with a wind speed of less than 25 kmph in the afternoon. The wind speed will gradually decrease becoming 15-20 kmph from the southeast direction during evening and night.

15.07.2025: Generally cloudy sky. Occasionally strong surface winds 20-30 kmph gusting to 40 kmph Very light to light rain accompanied with thunderstorms/lightning. The maximum and minimum temperatures over Delhi are likely to be in the range of 32 to 34°C and 24 to 26°C respectively. The minimum temperature will be below normal up to 1 to 2°C, and the maximum temperature will be below normal up to 1 to 2°C. The predominant surface wind will likely be from the southeast direction with a wind speed of less than 20 kmph during the morning hours. The wind speed will gradually increase becoming less than 25 kmph from the southeast direction in the afternoon. It will decrease becoming less than 15 kmph from the southeast direction during the evening and night.

16.07.2025: Partly cloudy sky. Very light to light rain accompanied with thunderstorms/lightning. The maximum and minimum temperatures over Delhi are likely to be in the range of 33 to 35°C and 24 to 26°C respectively. The minimum temperature will be below normal up to 1 to 3°C, and the maximum temperature will be below normal up to 1 to 2°C. The predominant surface wind will likely be from the southeast direction with a wind speed of less than 12 kmph during the morning hours. The wind speed will gradually increase becoming less than 15 kmph from the southeast direction in the afternoon. It will decrease becoming less than 12 kmph from the southeast direction during the evening and night.

17.07.2025: Partly cloudy sky. Very light to light rain accompanied with thunderstorms/lightning. The maximum and minimum temperatures over Delhi are likely to be in the range of 33 to 35°C and 24 to 26°C respectively. The minimum temperature will be below normal up to 1 to 2°C and the maximum temperature will be below normal up to 2 to 4°C. The predominant surface wind will likely be from the south direction with a wind speed of less than 12 kmph during the morning hours. The wind speed will gradually increase becoming less than 18 kmph from the southeast direction in the afternoon. It will decrease becoming less than 15 kmph from the northeast direction during the evening and night.

Impact expected and Action Suggested due to light to moderate rainfall with thunderstorm/lightning:

- Be cautious and take precautionary measures, though there is the likelihood of thunderstorms/lightning.
- Damage to standing crops, Minor to major damage to power and communication lines due to breaking of branches, Partial damage to vulnerable structures due to strong winds, Loose objects may fly.
- People are advised to keep a watch on the weather for worsening conditions and be ready to move to safer places accordingly, stay indoors, close windows & doors and avoid travel if possible, take safe shelters; do not take shelter under trees, do not lie on concrete floors and do not lean against concrete walls, unplug electrical/ electronic appliances, immediately get out of water bodies, keep away from all the objects that conduct electricity.

Impact & Action Suggested

- ✓ **Extremely heavy rainfall (≥ 21 cm) very likely at isolated places over** Rajasthan on 14th & 15th, Gangetic West Bengal, Odisha, southeast Jharkhand on 14th and Chhattisgarh on 15th July.
- ✓ **Very heavy rainfall very likely at isolated places over** Himachal Pradesh, Uttarakhand on 14th & 15th; West Rajasthan on 16th; West Madhya Pradesh, Gujarat Region on 14th, East Madhya Pradesh on 16th & 17th; Gangetic West Bengal, Odisha on 15th, Jharkhand, Chhattisgarh during 14th-16th, Bihar on 15th & 16th, East Uttar Pradesh on 17th, Kerala & Mahe, Tamil Nadu and Coastal Karnataka during 14th-20th July.

Impact Expected

- Localized Flooding of roads, water logging in low lying areas and closure of underpasses mainly in urban areas of (**Rajasthan and West Madhya Pradesh**) the above region.
- Occasional reduction in visibility due to heavy rainfall.
- Disruption of traffic in major cities due to water logging in roads leading to increased travel time.
- Minor damage to kutch roads.
- Possibilities of damage to vulnerable structure.
- Localized Landslides/Mudslides/landslips/mudslips/landsinks/mudsinks.
- Damage to horticulture and standing crops in some areas due to inundation.
- It may lead to riverine flooding in some river catchments (for riverine flooding please visit Web page of CWC)

Action Suggested

- Check for traffic congestion on your route before leaving for your destination.
- Follow any traffic advisories that are issued in this regard.
- Avoid going to areas that face the water logging problems often.
- Avoid staying in vulnerable structure.

Agromet advisories for likely impact of Heavy / Heavy to Very Heavy Rainfall

- In **East Rajasthan**, ensure proper drainage of excess water from rice nurseries and fields of maize, soybean, and black gram in the **Southeastern Humid Plain Zone**. In **Flood-Prone Eastern Plain Zone**, provide drainage in fields of pearl millet, sesame, black gram, and vegetables. In **Southern Humid Plain Zone**, postpone the sowing of soybean, maize, cotton, and groundnut, and ensure drainage of excess water from standing crops. In **Sub-Humid Southern Plains Zone**, postpone sowing of maize, soybean, green gram, black gram, and groundnut, and ensure drainage of excess water from standing crops. In **West Rajasthan**, postpone sowing of green gram, cluster bean, moth bean, sesame etc and make provision to drain out excess water from *kharif crops* in **Transitional Plain of Luni basin**.
- In **Uttar Pradesh**, make proper arrangements for drainage in standing crops and vegetable nurseries in **Eastern Plain Zone**; fields of rice, pulses (black gram, pigeon pea etc.) and groundnut in **Central Plain Zone**; and fields of paddy, spring sugarcane, pigeon pea, maize and vegetables in **South Western Semi-Arid Zone**. In **Chitrakoot district**, avoid sowing of sesame and pearl millet and nursery sowing of vegetables (chilli, brinjal, tomato, cabbage and bitter gourd) during heavy rainfall.
- In **Himachal Pradesh**, provide support to the cucumber vines and make proper drainage channels in vegetable and maize fields in **Mid Hills Sub Humid Zone**. In **Sub Montane and Low Hills Sub Tropical Zone**, ensure proper drainage in maize field to avoid water logging. Provide staking in cucumber, summer squash, bitter gourd and bottle gourd. Provide support (staking) to tall and leguminous crops.
- In **Uttarakhand**, ensure proper drainage facilities in soybean, maize, barnyard millet, finger millet, pigeon pea, kidney beans, vegetables and orchards. Harvest matured vegetables and fruits and store in safe place.
- In **Madhya Pradesh**, postpone sowing of *kharif* crops in regions with excessive rainfall. Drain out excess water from rice nurseries and fields of soybean, maize and vegetables in **Kymore Plateau and Satpura Hill Zone**; and from rice nurseries and sugarcane in **Central Narmada Valley Zone**. Ensure proper drainage facilities in the fields of maize, soybean and vegetables in **Satpura Plateau zone**; soybean and vegetables in **Vindhya Plateau Zone**; soybean and pearl millet in **Malwa Plateau Zone**; and soybean, maize, cotton and black gram in **Jhabua Hills Zone**. In **Central Narmada Valley Zone**, avoid sowing of soybean and maize crop till the cessation of heavy rains.
- In **Chhattisgarh**, make arrangements for drainage of excess water from rice fields. Provide mechanical support to orchards and other tall/weak crops with stakes or bamboo to prevent lodging or breakage. Postpone transplanting of minor millets and *kharif* vegetables like tomato, chilli, okra, brinjal, pumpkin, gourd, radish and cauliflower etc.
- In **Gangetic West Bengal**, postpone transplanting of paddy nurseries and sowing of groundnut and vegetables in **Undulating Red and Laterite Zone** and **Coastal Saline Zone**. Ensure proper drainage in the standing field crops and vegetables.
- In **Odisha**, ensure adequate drainage in already sown rice nurseries and fields of maize and vegetables to avoid waterlogging. Postpone sowing of paddy nurseries, maize, and vegetable transplanting in **North Central Plateau Zone**; postpone sowing of paddy nurseries, millets, arhar, maize, groundnut, and vegetables in **North Western Plateau Zone**.
- In **Jharkhand**, make necessary arrangements to drain out excess water from maize fields, rice and vegetable nurseries. Cover the vegetable nurseries with polythene sheets.
- In **Gujarat region**, drain out excess water from rice nurseries, sugarcane fields, banana and mango plantations to prevent waterlogging. Provide support to sugarcane with strong bamboo or tie the leaves together to prevent lodging

- In **Coastal Karnataka**, drain out excess water from rice nurseries, transplanted rice fields and plantations of arecanut and coconut in **Coastal Zone**; and from rice nurseries and fields of maize, cotton and ginger and plantations of arecanut in **Hill Zone**.

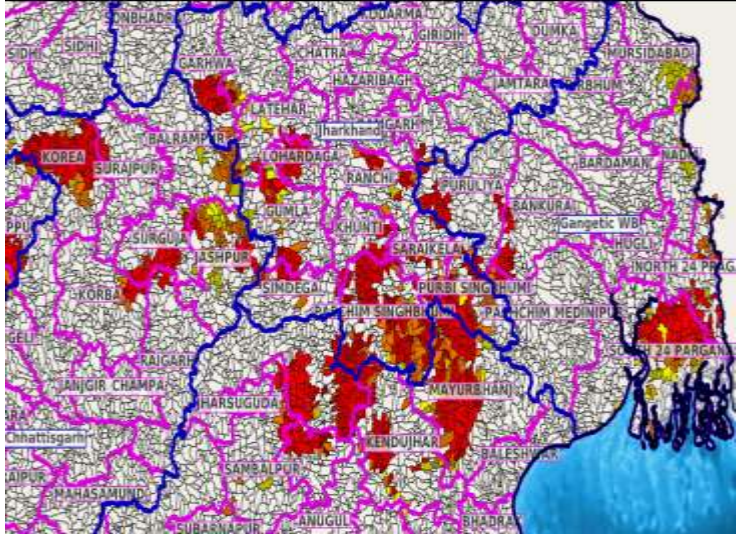
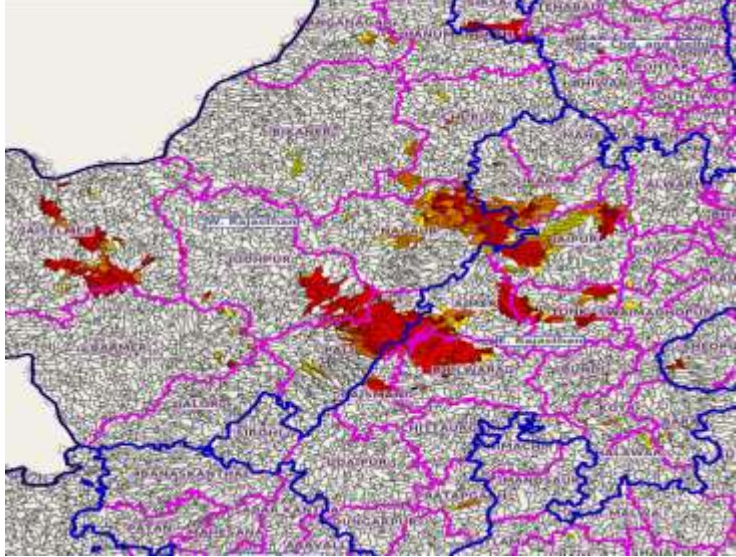
Livestock / Fishery

- Keep the animals inside the shed during heavy rainfall and provide them balanced feed.
- Store feed and fodder in a safe place to prevent spoilage.
- Construct an outlet with proper netting around the ponds to drain out excess water, thereby preventing fish from escaping in case of overflow.

Agromet advisories for likely impact of Thunderstorm / Gusty Winds / Squally Winds

- Provide mechanical support to horticultural crops and staking or support to vegetables and young fruit plants / fruit-bearing plants to avoid lodging due to strong winds.

Flash flood guidance:

<p>24 hours Outlook for the Flash Flood Risk (FFR) till 1130 IST of 15-07-2025 :</p> <p>Moderate to High flash flood risk likely over few watersheds & neighbourhoods of following Met Sub-divisions during next 24 hours.</p> <p>Chhattisgarh - Balarampur, Jashpur, Korba, Korea, Raigarh, Surajpur and Surguja districts.</p> <p>Odisha - Deogarh, Kendujhar, Mayurbhanj, Sambalpur and Sundargarh districts.</p> <p>Gangetic West Bengal - Bankura, Eastmednipur, Mursidabad, Nadia, North 24 Pragana, Pashchim Medinipur, Puruliya and South 24 Parganas districts.</p> <p>Jharkhand - Bokaro, East Singhbhum, Garhwa, Gumla, Khunti, Latehar, Lohardaga, Palamu, Ranchi, Saraikela, Simdega and West Singhbhum districts.</p> <p>Surface runoff/ Inundation may occur at some fully saturated soils & low-lying areas over Area of Concern (AoC) as shown in map due to expected rainfall occurrence in next 24 hours.</p>	<p>Product: GFS FFR Timescale: 24-hr Region: "INDIA" Product Date: 2025-07-14 06:00 UTC Valid Date: 2025-07-15 06:00 UTC</p> 
<p>24 hours Outlook for the Flash Flood Risk (FFR) till 1130 IST of 15-07-2025 :</p> <p>Low to Moderate flash flood risk likely over few watersheds & neighbourhoods of following Met Sub-divisions during next 24 hours.</p> <p>East Rajasthan - Ajmer, Bhilwara, Jaipur, Jhalawar, Kota, Pratapgarh, Rajsmand, Sikar, Swaimadhopur and Tonk districts.</p> <p>West Rajasthan - Bikaner, Churu, Hanumangarh, Jaisalmer, Jodhpur, Nagaur and Pali districts.</p> <p>Surface runoff/ Inundation may occur at some fully saturated soils & low-lying areas over Area of Concern (AoC) as shown in map due to expected rainfall occurrence in next 24 hours.</p>	<p>Product: NCUM FFR Timescale: 24-hr Region: "INDIA" Product Date: 2025-07-14 06:00 UTC Valid Date: 2025-07-15 06:00 UTC</p> 

Legends & abbreviations:

- ❖ **Heavy Rain:**64.5-115.5mm; **Very Heavy Rain:**115.6-204.4mm; **Extremely Heavy Rain:** >204.4mm.
- ❖ **Obsy:** Observatory; Automatic Weather Station; **ARG:** Automatic Rain Gauge; **dist:** District; **NH:** National Highway; **KVK:** Krishi Vigyan Kendra; **DVC:** Damodar Valley Corporation; **PTO:** Part Time Office, **Aero:** Aerodrome, **IAF:** Indian Air Force.
- ❖ **Region wise classification of meteorological Sub-Divisions:**
 - **Northwest India:** Western Himalayan Region (Jammu-Kashmir-Ladakh-Gilgit-Baltistan-Muzaffarabad, Himachal Pradesh and Uttarakhand); Punjab, Haryana-Chandigarh-Delhi; West Uttar Pradesh, East Uttar Pradesh, West Rajasthan and East Rajasthan.
 - **Central India:** West Madhya Pradesh, East Madhya Pradesh, Vidarbha and Chhattisgarh.
 - **East India:** Bihar, Jharkhand, Sub-Himalayan West Bengal & Sikkim; Gangetic West Bengal, Odisha and Andaman & Nicobar Islands.
 - **Northeast India:** Arunachal Pradesh, Assam & Meghalaya and Nagaland, Manipur, Mizoram & Tripura.
 - **West India:** Gujarat Region, Saurashtra & Kutch, Konkan & Goa, Madhya Maharashtra and Marathawada.
 - **South India:** Coastal Andhra Pradesh & Yanam, Telangana, Rayalaseema, Coastal Karnataka, North Interior Karnataka, South Interior Karnataka, Kerala & Mahe, Tamil Nadu, Puducherry & Karaikal and Lakshadweep.

LEGENDS

1. अंडमान और निकोबार द्वीपसमूह

2. अरुणाचल प्रदेश

3. असम और मेघालय

4. नागालैंड, मणिपुर, मिजोरम और त्रिपुरा

5. उप-हिमालयी पश्चिम बंगाल और सिक्किम

6. गंगीय पश्चिम बंगाल

7. ओडिशा

8. झारखंड

9. बिहार

10. पूर्वी उत्तर प्रदेश

11. पश्चिम उत्तर प्रदेश

12. उत्तराखंड

13. हरियाणा, चंडीगढ़ और दिल्ली

14. पंजाब

15. हिमाचल प्रदेश

16. जम्मू और कश्मीर और लद्दाख

17. पश्चिम राजस्थान

18. पूर्वी राजस्थान

19. पश्चिम मध्य प्रदेश

20. पूर्वी मध्य प्रदेश

21. गुजरात

22. सौराष्ट्र

23. कोंकण और गोवा

24. मध्य महाराष्ट्र

25. मराठवाड़ा

26. विदर्भ

27. छत्तीसगढ़

28. तटीय आंध्र प्रदेश और यनम

29. तेलंगाना

30. रायलसीमा

31. तमिलनाडु, पुडुचेरी और कराईकल

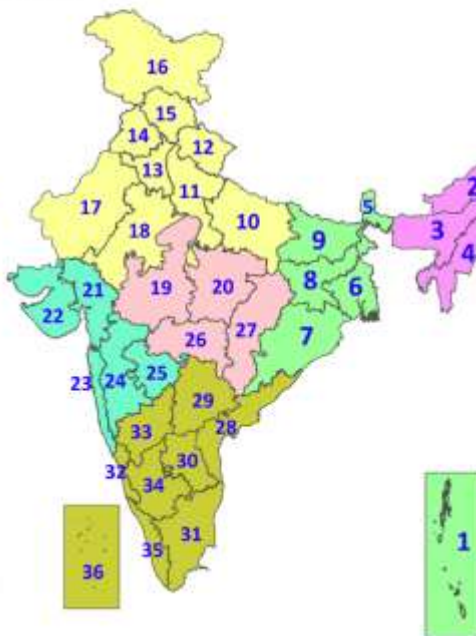
32. तटीय कर्नाटक

33. आंतरिक उत्तरी कर्नाटक

34. आंतरिक दक्षिणी कर्नाटक

35. केरल और माहे

36. लक्षद्वीप



1. Andaman & Nicobar Islands

2. Arunachal Pradesh

3. Assam & Meghalaya

4. Nagaland, Manipur, Mizoram & Tripura

5. Sub-Himalayan West Bengal & Sikkim

6. Gangetic West Bengal

7. Odisha

8. Jharkhand

9. Bihar

10. East Uttar Pradesh

11. West Uttar Pradesh

12. Uttarakhand

13. Haryana, Chandigarh & Delhi

14. Punjab

15. Himachal Pradesh

16. Jammu & Kashmir and Ladakh

17. West Rajasthan

18. East Rajasthan

19. West Madhya Pradesh

20. East Madhya Pradesh

21. Gujarat

22. Saurashtra

23. Konkan & Goa

24. Madhya Maharashtra

25. Marathwada

26. Vidarbha

27. Chhattisgarh

28. Coastal Andhra Pradesh & Yanam

29. Telangana

30. Rayalaseema

31. Tamilnadu, Puducherry & Karaikal

32. Coastal Karnataka

33. North Interior Karnataka

34. South Interior Karnataka

35. Kerala & Mahe

36. Lakshadweep

SPATIAL DISTRIBUTION (% of Stations reporting)

% Stations	Category	% Stations	Category
76-100	Widespread (WS/Most Places)	26-50	Scattered (SCT/A Few Places)
51-75	Fairly Widespread (FWS/Many Places)	1-25	Isolated (ISOL)



Fog



Heavy Snow



Cold Wave



Heavy Rain



Dust Storm



Cold Day



Very Heavy Rain



Heat Wave



Ground Frost



Extremely Heavy Rain



Warm Night



Thunder & Lightning



Hot Day



Hailstorm



Hot & Humid



Dust Raising Winds



Strong Surface Winds

COLOUR CODED WARNING

No Warning (No Action)

Watch (Be Aware)

Alert (Be Prepared To Take Action)

Warning (Take Action)

Probabilistic Forecast

Terms	Probability of Occurrence (%)
Unlikely	< 25
Likely	25 - 50
Very Likely	50 - 75
Most Likely	> 75

* Red colour warning does not mean "Red Alert", Red colour warning means "Take Action".

Forecast and Warning for any day is valid from 0830 hours IST of day till 0830 hours IST of next day.

For more details, kindly visit <https://mausam.imd.gov.in> or contact: 011-2434-4599

(Service to the Nation since 1875)

DEFINITION/CRITERIA

Rain/ Snow *

Heavy: 64.5 to 115.5 mm/cm *
Very Heavy: 115.6 to 204.4 mm/cm *
Extremely Heavy: > 204.4 mm/cm *

Heat Wave

When maximum temperature of a station reaches $\geq 40^{\circ}\text{C}$ for plains and $\geq 30^{\circ}\text{C}$ for hilly regions
(a) Based on Departure from normal

Heat Wave: Maximum Temperature Departure from normal 4.5°C to 6.4°C .

Severe Heat Wave: Maximum Temperature Departure from normal $\geq 6.5^{\circ}\text{C}$

(b). Based on Actual maximum temperature

Heat Wave: When actual maximum temperature $\geq 45^{\circ}\text{C}$.

Severe Heat Wave: When actual maximum temperature $\geq 47^{\circ}\text{C}$.

(c). Criteria for heat wave for coastal stations

When maximum temperature departure is $> 4.5^{\circ}\text{C}$ from normal. Heat Wave may be described provided maximum temperature $\geq 37^{\circ}\text{C}$.

Warm Night

When maximum temperature remains 40°C

Warm Night: When minimum temperature departure 4.5°C to 6.4°C .

Severe Warm Night: When minimum temperature departure $> 6.4^{\circ}\text{C}$.

Cold Wave

When minimum temperature of a station $\leq 10^{\circ}\text{C}$ for plains and $\leq 0^{\circ}\text{C}$ for hilly regions.

(a). Based on departure

Cold Wave: Minimum Temperature Departure from normal -4.5°C to -6.4°C .

Severe Cold Wave: Minimum Temperature Departure from normal $\leq -6.5^{\circ}\text{C}$

(b) Based on actual Minimum Temperature (for Plains only)

Cold Wave: When Minimum Temperature is $\leq 4.0^{\circ}\text{C}$

Severe Cold Wave: When Minimum Temperature is $\leq 2.0^{\circ}\text{C}$

(c) For Coastal Stations

When Minimum Temperature departure is $\leq -4.5^{\circ}\text{C}$ & actual Minimum Temperature is $\leq 15^{\circ}\text{C}$

Cold Day

When minimum temperature of a station $\leq 10^{\circ}\text{C}$ for plains and $\leq 0^{\circ}\text{C}$ for hilly regions

Based on departure

Cold Day: Maximum Temperature Departure from normal -4.5°C to -6.4°C .

Severe Cold Day: Maximum Temperature Departure from normal $\leq -6.5^{\circ}\text{C}$

Fog

Phenomenon of small droplets suspended in air and the horizontal visibility $< 1\text{km}$

Moderate Fog: When the visibility between 500-200 metres

Dense Fog: when the visibility between 50- 200 metres

Very Dense Fog: when the visibility < 50 metres

Thunderstorm

Sudden electrical discharges manifested by a flash of light (Lightning) and a sharp rumbling sound (thunder)

Dust/Sand Storm

An ensemble of particles of dust or sand energetically lifted to great heights by a strong and turbulent wind.

Frost

Ice deposits on ground

Air temperature $\leq 4^{\circ}\text{C}$ (over Plains)

Squall

A strong wind that rises suddenly, lasts for atleast 1 minute.

Moderate: Wind speed 52-61 kmph

Severe: Wind speed 62-67 kmph

Very Severe: Wind speed > 67 kmph

Sea State

Effect of various waves in the sea over specific area

Rough to very rough: Wind speed 41-62 kmph (22-33 knots) & Wave height 2.5-6 metre

High to very high: Wind speed 63-117 kmph (34-63 knots) & Wave height 6-14 metre

Phenomenal: Wind speed > 117 kmph (> 63 knots) & Wave height > 14 metre

Cyclone

Cyclonic Storm: Wind speed 62-87 kmph (34-47 knots)

Severe Cyclonic Storm: Wind speed 88-117 kmph (48-63 knots)

Very Severe Cyclonic Storm: Wind speed 118-165 kmph (64 - 89 knots)

Extremely Severe Cyclonic Storm: Wind speed 166-220 kmph (90 -119 knots)

Super Cyclone Storm: Wind speed > 220 kmph (> 119 knots)

* Red colour warning does not mean "Red Alert", Red colour warning means "Take Action".

Forecast and Warning for any day is valid from 0830 hours IST of day till 0830 hours IST of next day.

For more details, kindly visit <https://mausam.imd.gov.in> or contact: 011-2434-4599

(Service to the Nation since 1875)

Hot and Humid: When maximum temperatures remain 3°C above normal along with the above normal relative humidity.